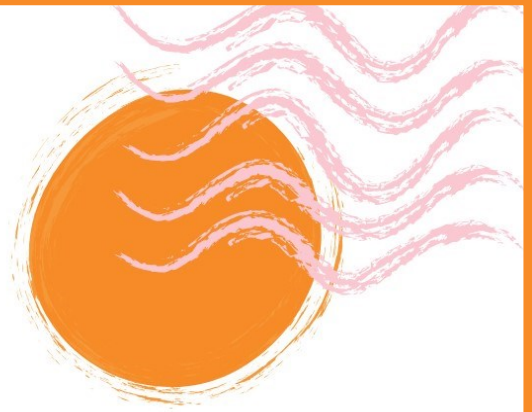


Kids



BIRTHDAY PARTIES

\$14 per child

minimum of 10 kids

- Setup of Party including Party Linen
- Colored Napkins
- Plastic Cups and Side Plates
- Kid Friendly Selection of Hot Party Food
Sausage Rolls, Party Pies, Kids Calamari,
Nuggets, Fish Pieces and Hot Chips
- Party Treats on Arrival (fairy bread etc.)
- Ice Cream Cake or Drumstick Ice-Cream
- Tables for Gifts and Cake
- Two Kids Playrooms available (not exclusive)

WONTHAGGI WORKMENS CLUB
75 GRAHAM STREET WONTHAGGI 3995
PHONE 5672 1083
WWW.WONTHAGGIWORKMENS.COM.AU



Celebrate your Child's Birthday at the Wonthaggi Workmen's Club
Recommended for children between the ages of 3 and 12 years
MONDAY TO SATURDAY ONLY Party Time: 11.00am to 1.00pm
COST PER CHILD \$12.00 (minimum of 10 children)

INCLUDES:

- Setup of Party Table Including Party Linen
- Colored Napkins
- Plastic Cups and Side Plates
- Kids Friendly Selection of Hot Party Food Sausage Rolls, Party Pies, Kids Calamari, Nuggets, Fish Pieces, and Hot Chips
- Party Treats on Arrival (Fairy Bread etc.)
- Ice Cream Cake or Drumstick Ice Cream Dessert
- Tables for Gifts and Cake
- Two Children's Playrooms Available for games

GUEST NUMBERS ARE TO BE CONFIRMED THE DAY BEFORE THE PARTY PLEASE CALL 5672 1083

PARTIES NOT CONFIRMED WILL NOT BE SET

- Parents are welcome to a table of their own and order off the menu
- Use of the Playroom is not exclusive
- Lolly Bags and Balloons are not provided, but you are welcome to bring your own.
- Soft Drinks and Juices are available for purchase from the bar.
- Please read the terms and conditions below.

TERMS AND CONDITIONS: All persons under the age of 18 need to be accompanied by a legal parent/guardian. We request catering and guest numbers to be confirmed the day prior to the function. This number will be considered final and the minimum charged for. Accounts can be settled on the day. The Children's playroom is designed for children between 3 and 12 years of age. All children using the playroom are to be supervised by a parent or suitable adult. Club management does not accept any liability for any accident or injury however caused whilst using the play equipment. Unfortunately accidents do happen and any unnecessary damage to the Club and property will be the responsibility of the function host. Likewise, we cannot be responsible for items lost in the Club or the car park before, during or after the function. Due to Food Licensing, External catering, take away food cannot be brought into the venue for consumption.



75 Graham Street Wonthaggi 3995 | 5672 1083
email : manager@wonthaggiworkmens.com.au
web: www.wonthaggiworkmens.com.au